

**INTERVENTO DI MESSA IN SICUREZZA PER DISSESTO IDROGEOLOGICO CAPOLUOGO**



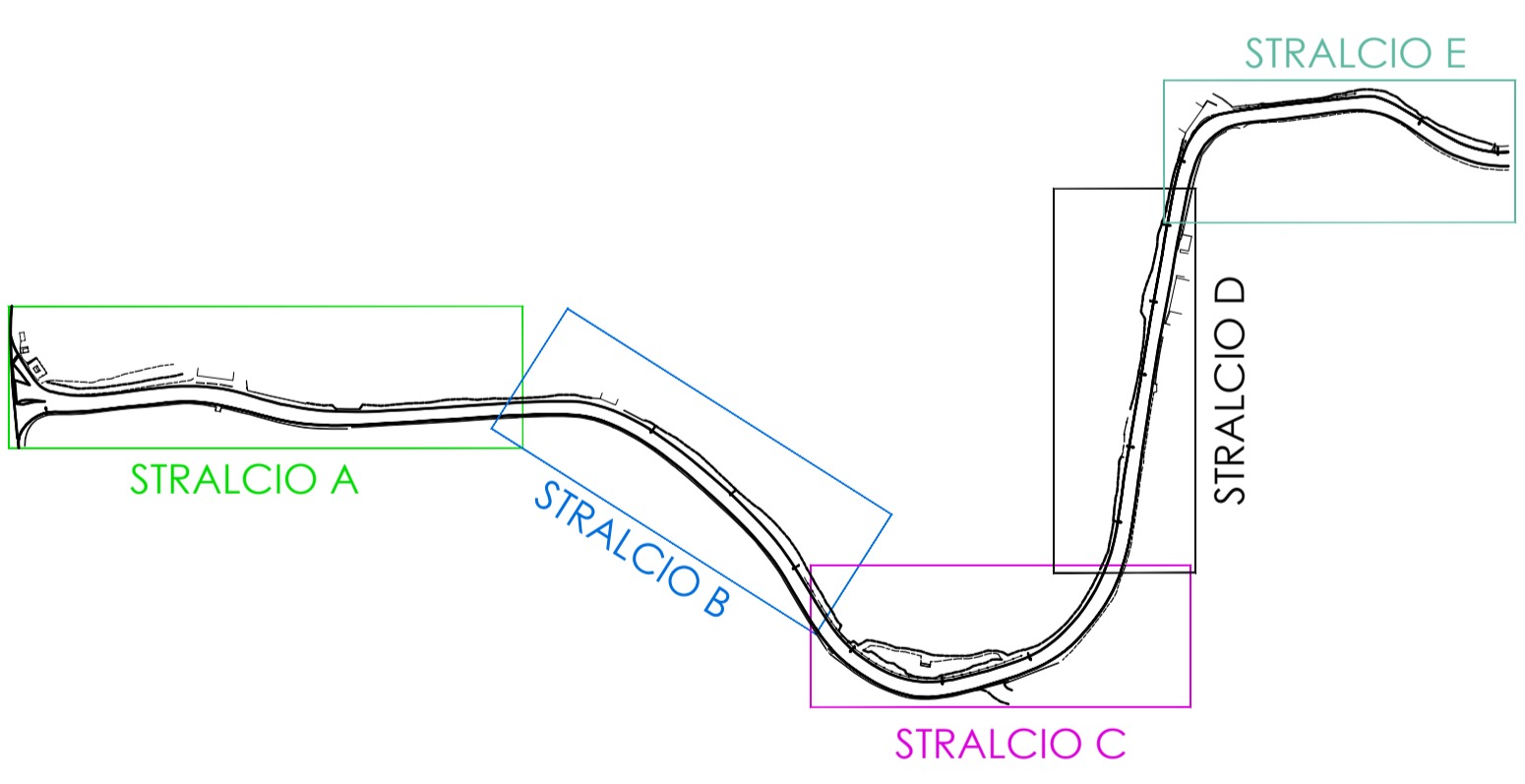
**PROGETTO DEFINITIVO - ESECUTIVO**

PROGETTAZIONE  
**buildesign s.r.l.**  
 Ing. Andrea Cecilia  
COGLI 0707900091 - TEL. 0746/200000  
 email: info@buildesign.it - www.buildesign.it  
 Cod.Fisc. / P. IVA 07120710205

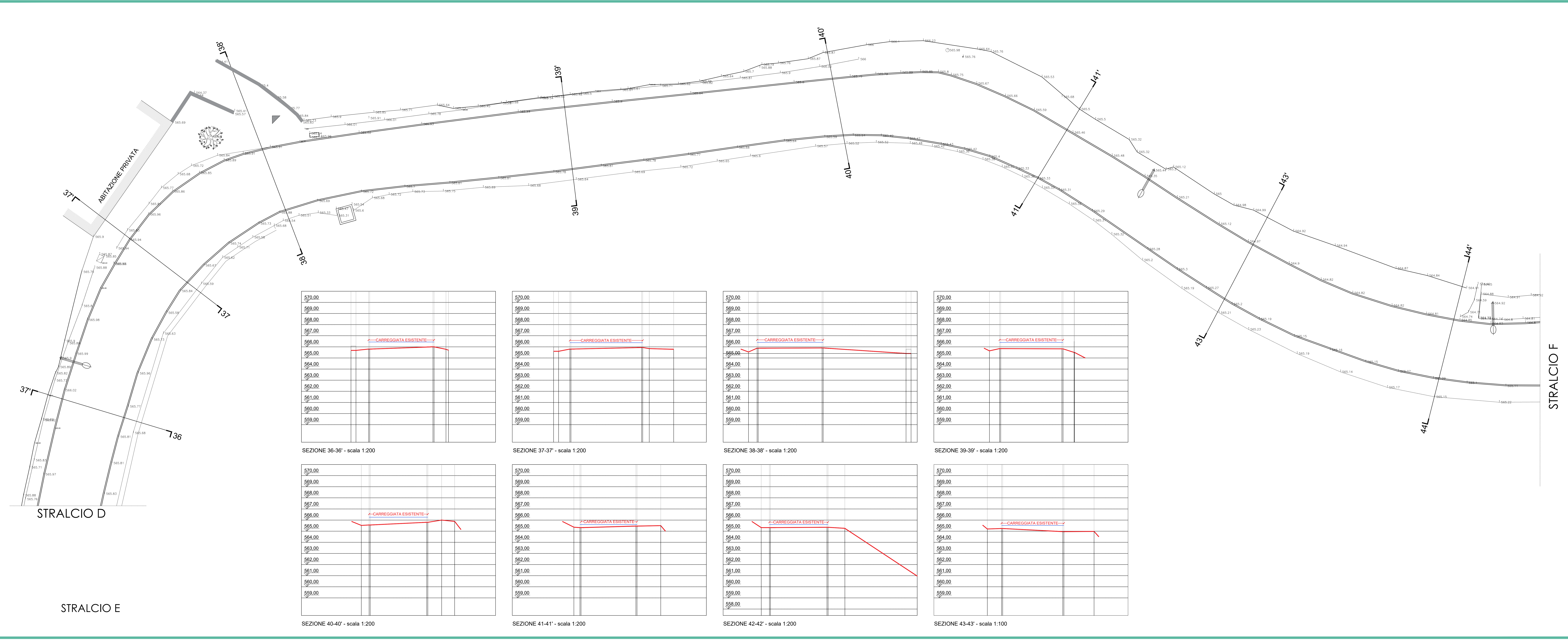
RESPONSABILE DEL PROCEDIMENTO  
 Ing. Stefano Berton

RELAZIONE GEOLOGICA E INDAGINI  
 Geologo Roberto Seri

SA02.7	RILIEVO TOPOGRAFICO STRADA STALCIO E		
SCALA	Varie	FORMATO	A0
		DATA	NOVEMBRE 2022

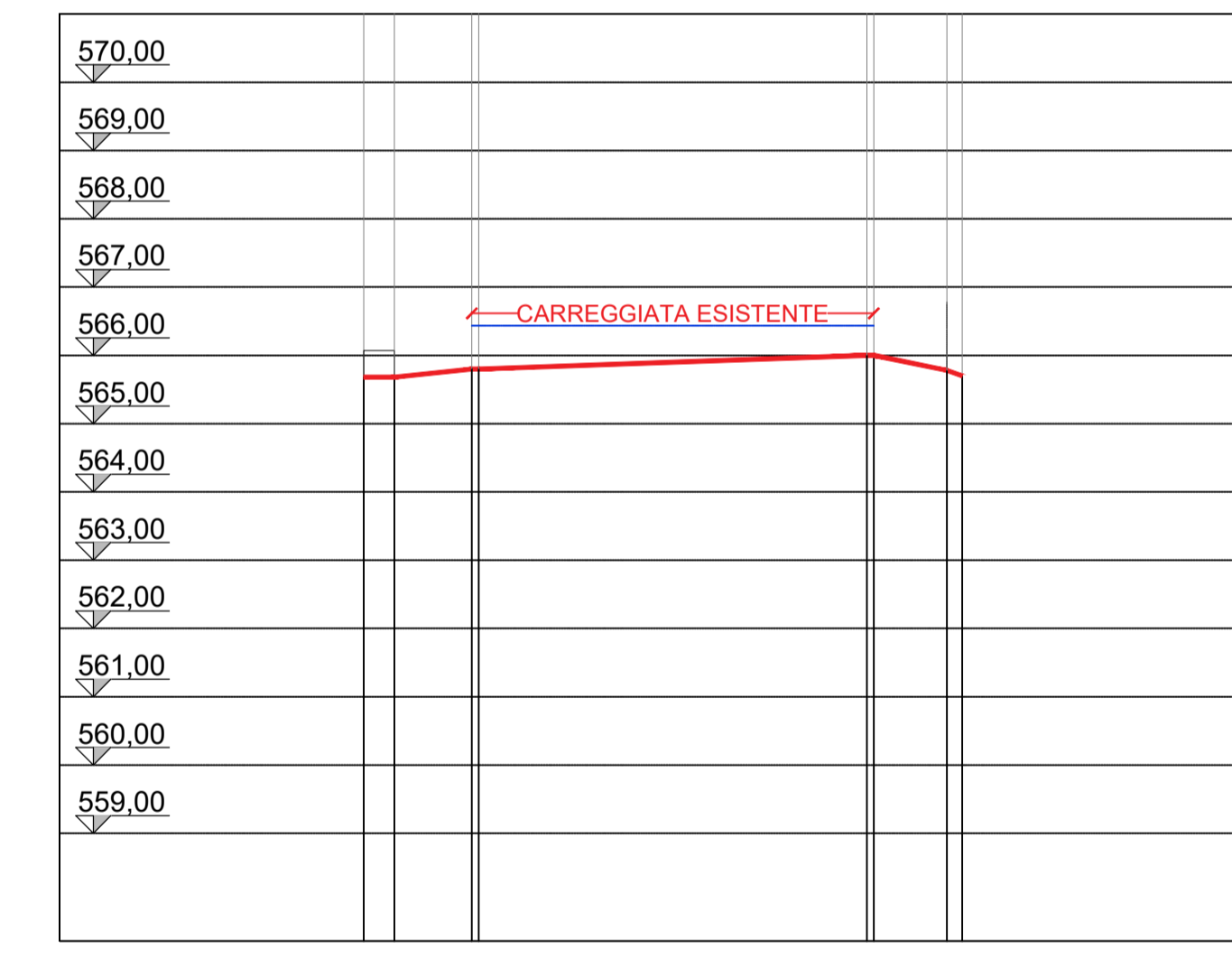


QUADRO DI UNIONE

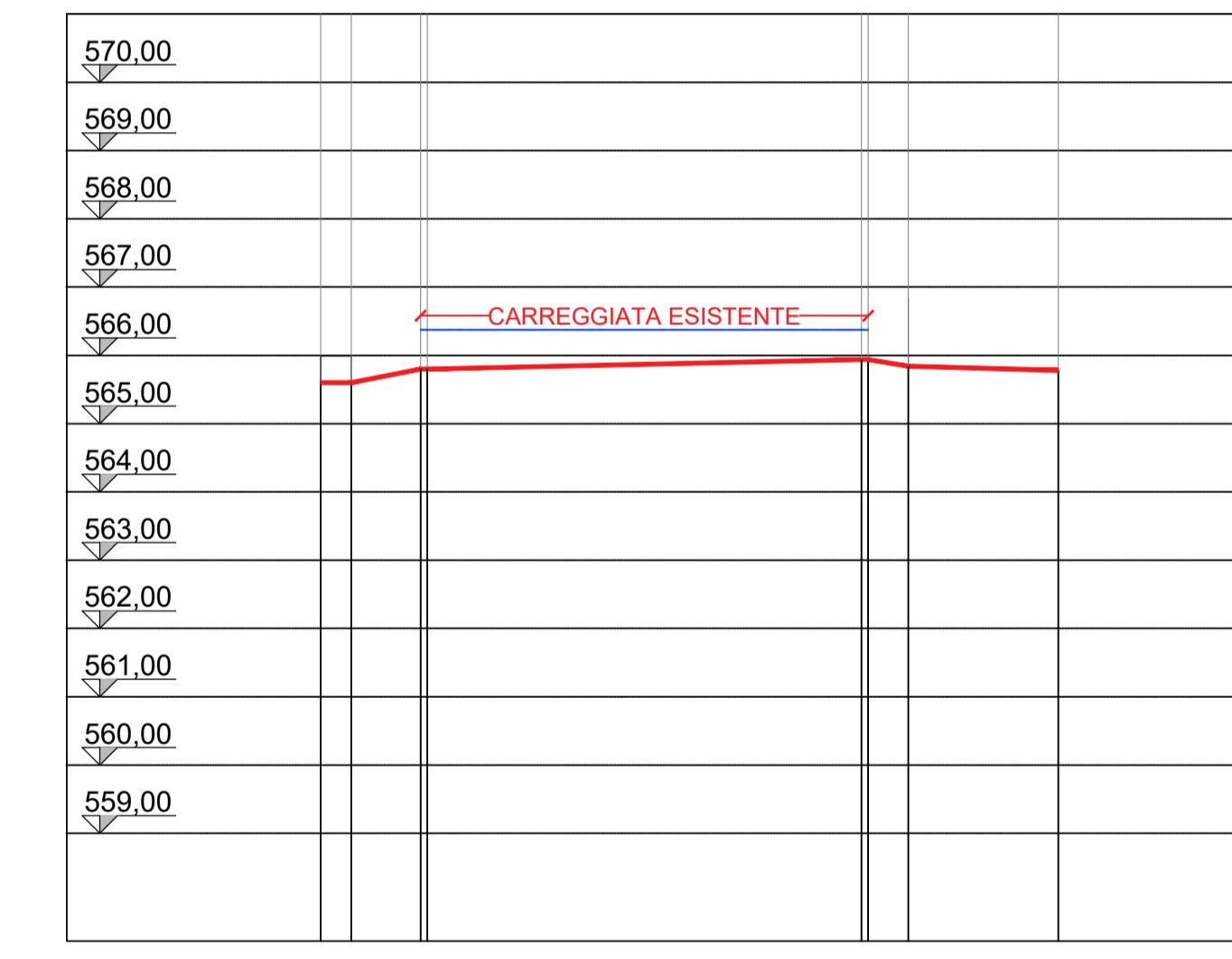


STRALCIO D

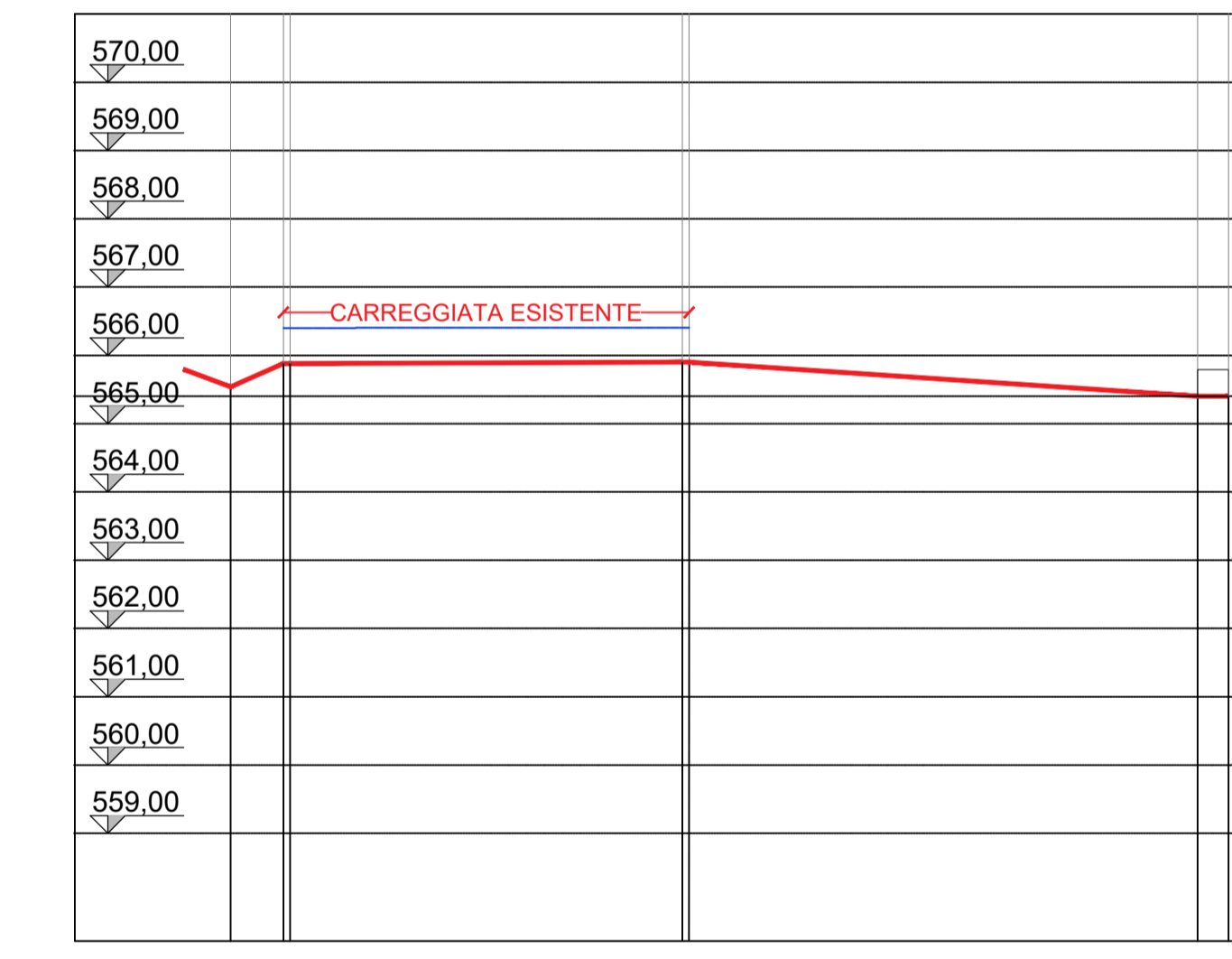
STRALCIO E



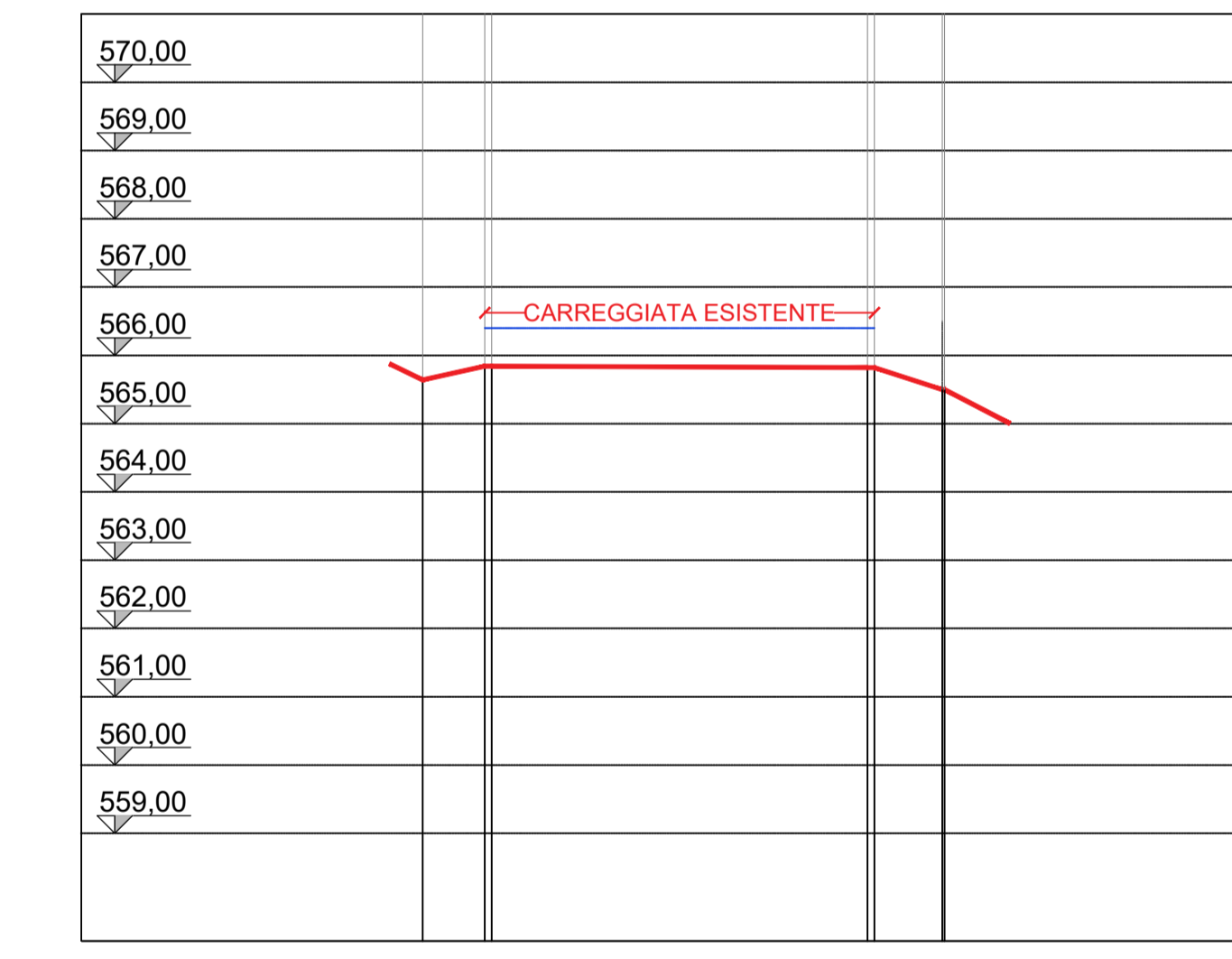
SEZIONE 36-36' - scala 1:200



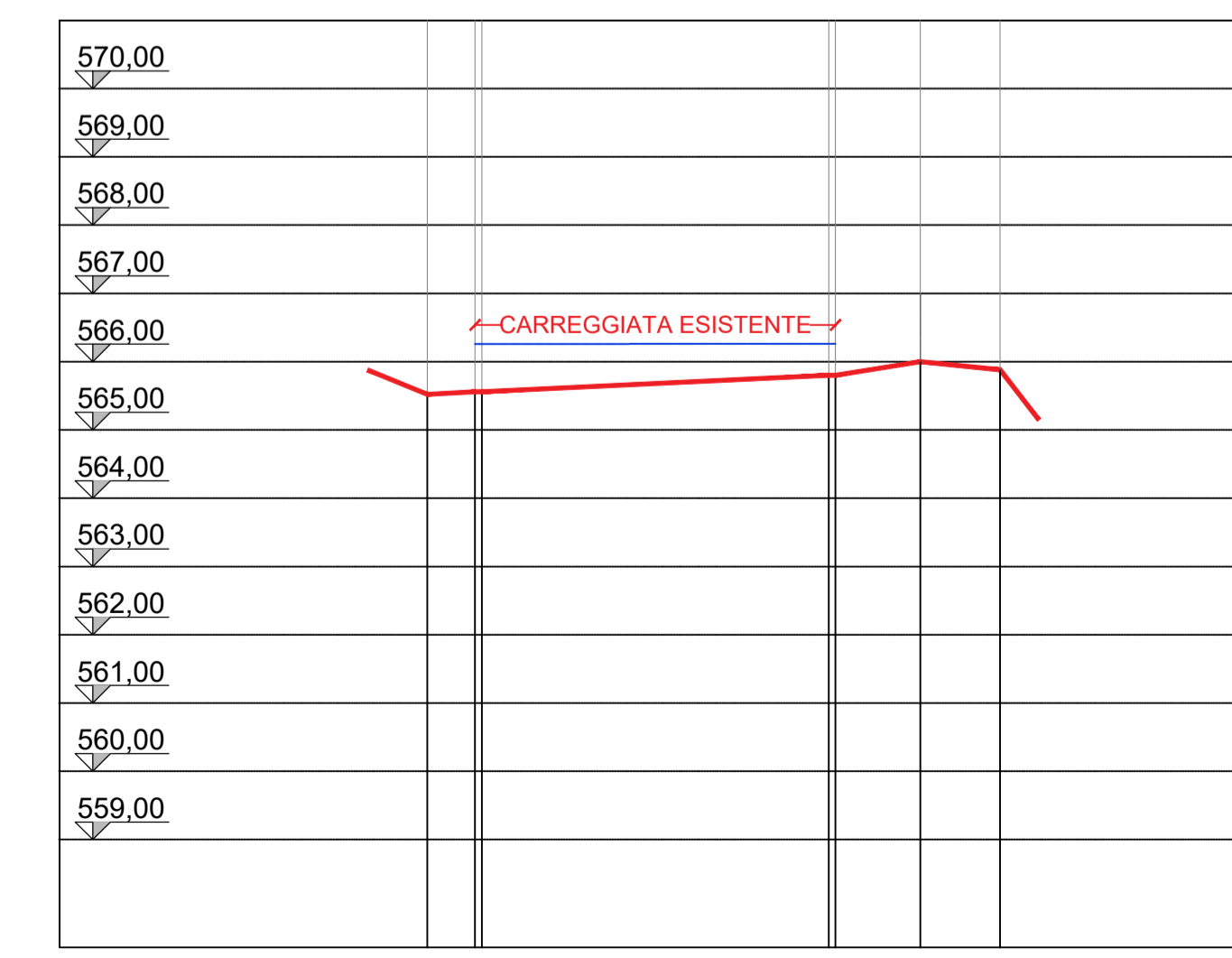
SEZIONE 37-37' - scala 1:200



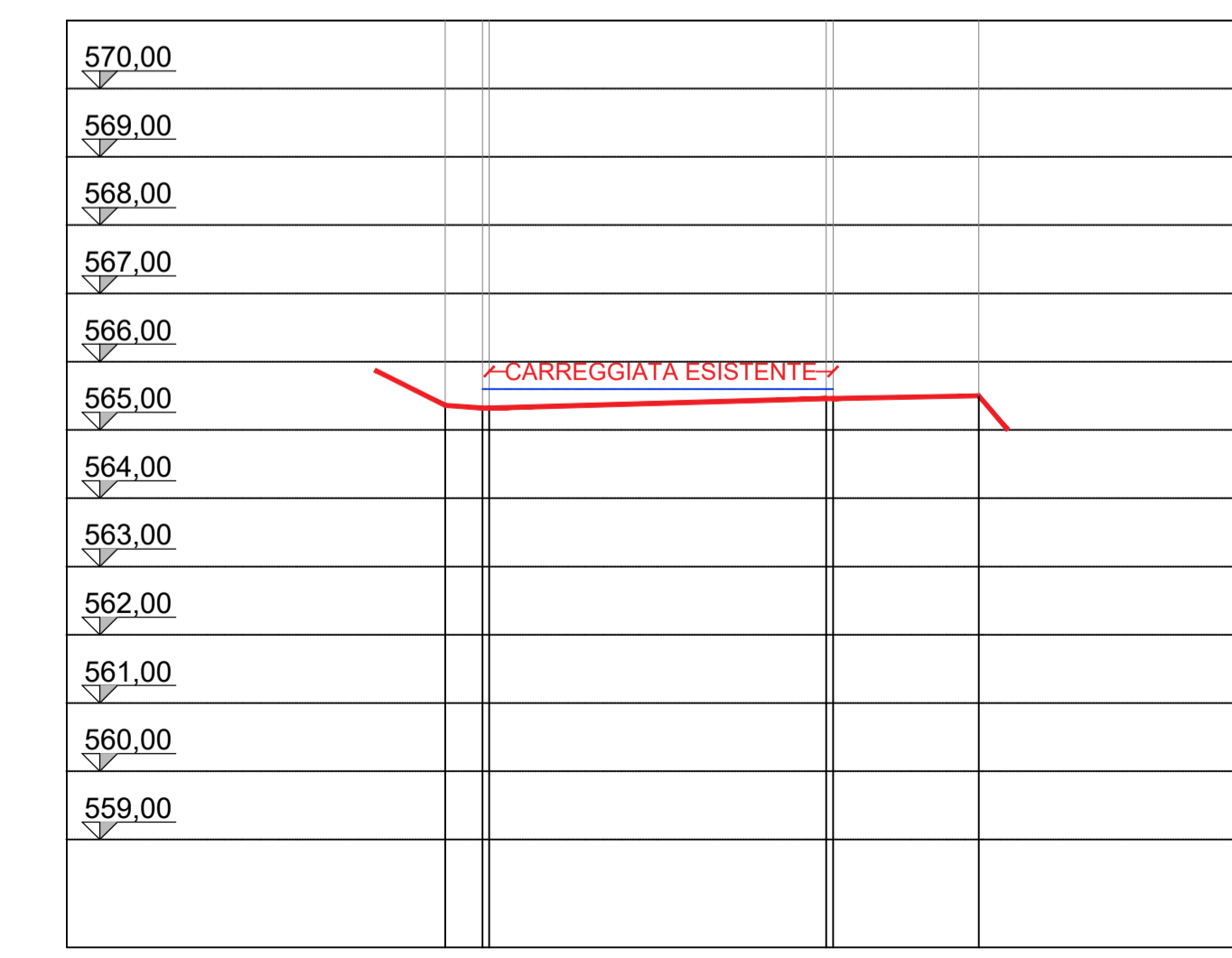
SEZIONE 38-38' - scala 1:200



SEZIONE 39-39' - scala 1:200



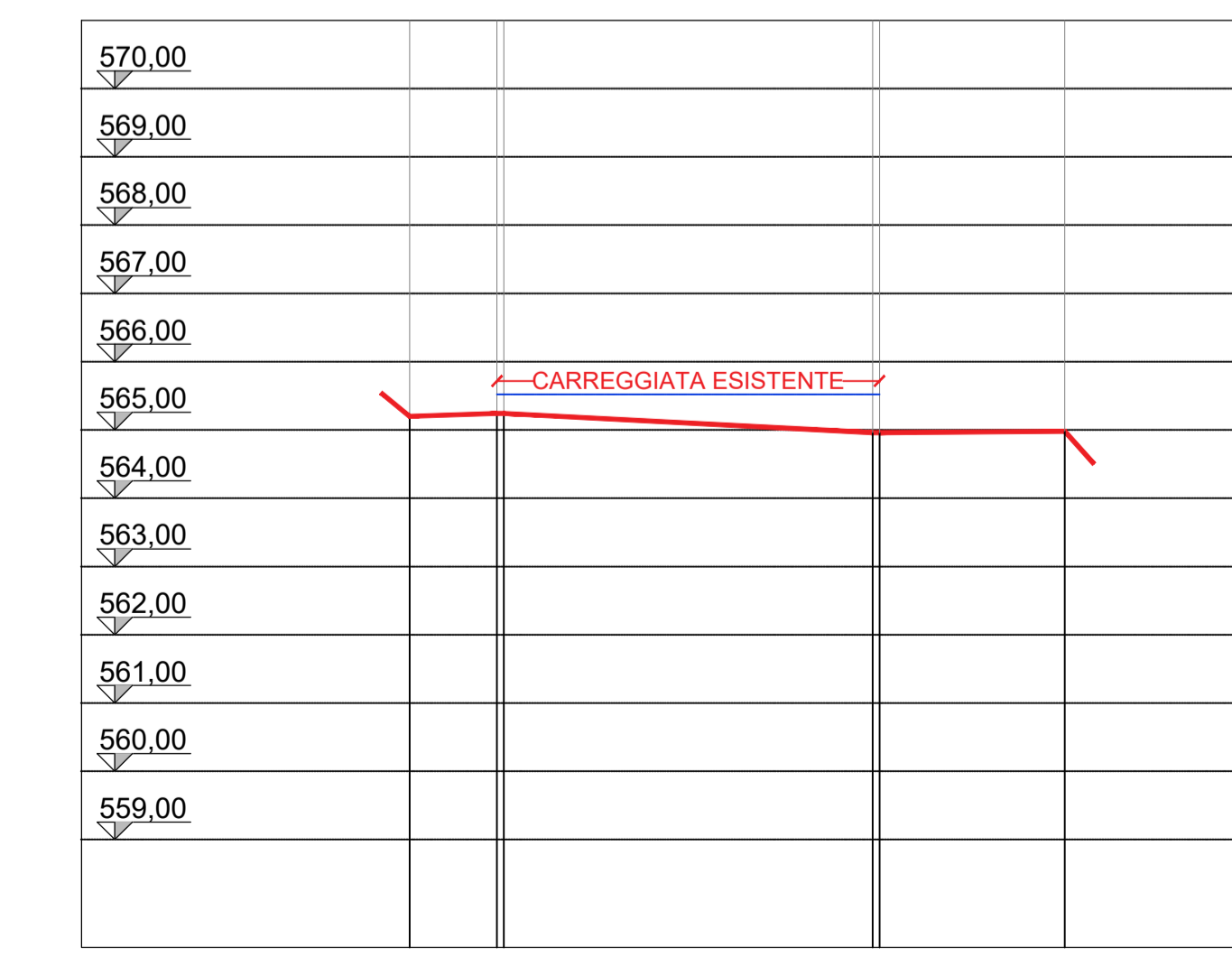
SEZIONE 40-40' - scala 1:200



SEZIONE 41-41' - scala 1:200



SEZIONE 42-42' - scala 1:200



SEZIONE 43-43' - scala 1:100

STRALCIO F